






BUSINESS — PROFILE

 admin@ksaholdings.co.za
 +27 79 623 4210
 +27 13 170 8030

KSA HOLDINGS PTY LTD
REG. NO.: 2015/043483/07
TAX NO.: 9156955198
CSD NO.: MAAA0707252

● 12 DA VINCI STREET ● REYNO RIDGE ● EMALAHLENI ● 1049



CONTENT

- COMPANY HISTORY
- COMPANY ORGANOGRAM
- SCOPE OF WORK
- REFERENCES



COMPANY HISTORY

KSA Holdings is a black owned company found in 2015. The company was found after we saw a gap in the market since there were no black owned companies that specialized in the distribution of yellow machines. The core function of our company is in the Mechanical Engineering industry. We have a workshop at Rietspruit and that is where our company performs its essential functions such as component rebuilds, overhauls of machinery such tyre Dozer to D11, Grader, ADT's and 776-793's as well as loaders, drills, excavators and shovels. We also repair buckets and blades as well as Dragline buckets. We gave our division which is fabrication and maintenance. Most of our artisans are highly trained by OEM, therefore we guarantee high quality, safety and delivery on specified time frames.

OUR VISION

Is to be the leader of all locally owned engineering and design companies by offering the highest degree of technical and operational efficiency for commercial and industrial projects. We will grow our company in a balanced and healthy way. This will allow us to provide our clients with result focused solutions. In addition, it will provide career opportunities for our employees with on-going challenge that fuel the passion behind company.



OUR MISSION



Is to exist to provide mechanical services through engineered solution and processes. KSA Holdings will provide these services by offering technical and operational expertises, safe practices, service, repair, build and maintain processes. By building long term relationships, KSA Holdings will continue to help our clients solve in solving their most challenging problems. KSA Holdings is committed to providing a career-oriented environment which encourages our team to challenge themselves through personal improvements, while continuing to build a strong, healthy company.

OUR VALUES

- ▶ Integrity- Respectful and trusting interactions
- ▶ Commitment- Creating and executing inspired solutions
- ▶ Excellence- Delivering bolder, brighter, better outcomes
- ▶ Growth- A willingness to train, a desire to learn.



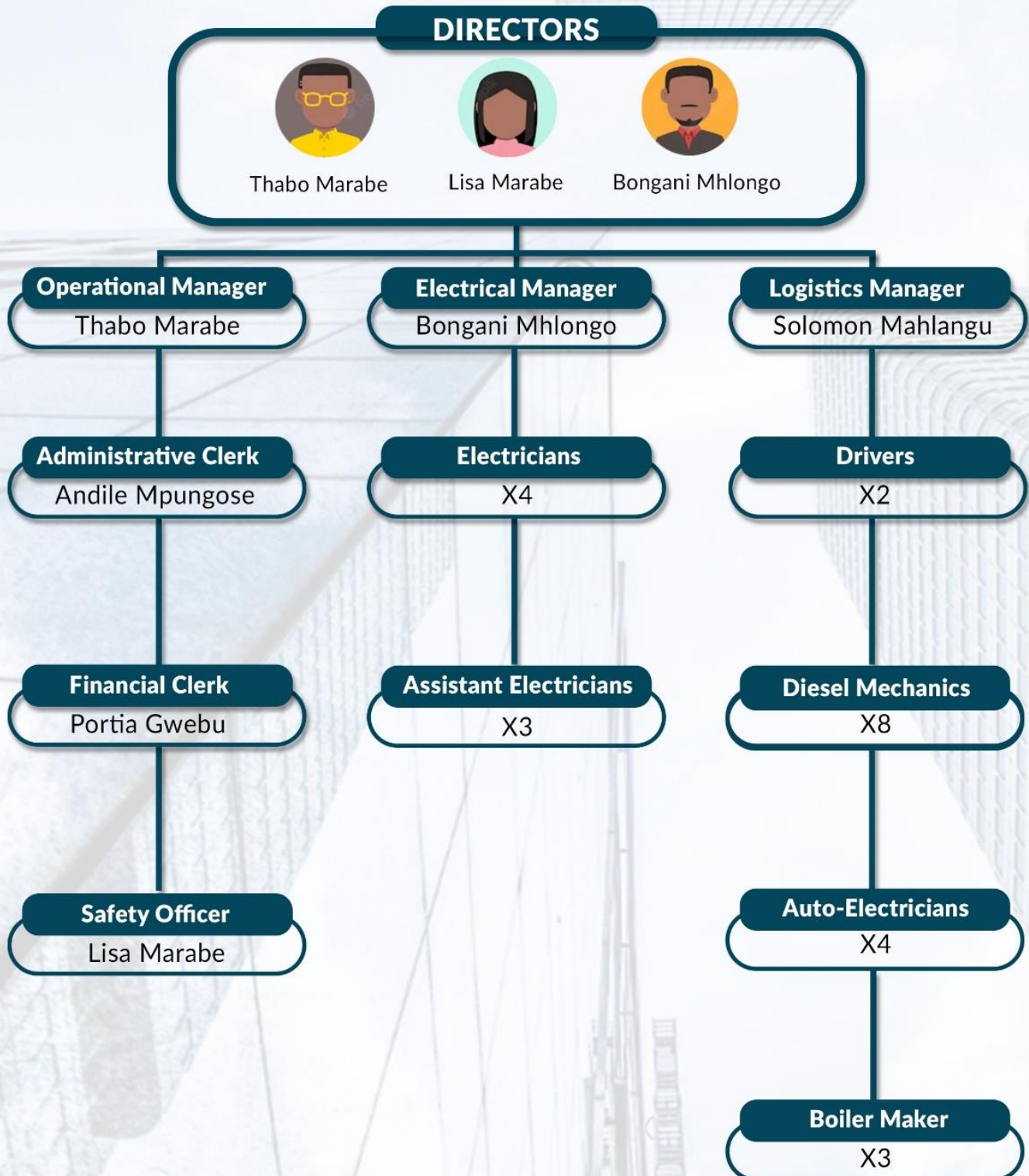
OUR OBJECTIVES

- ▶ Act at all times in the legitimate interests of the client and other stakeholders involved and execute the work with integrity, faithfulness, confidentiality, efficiency, competence and in a non-discriminatory manner.
- ▶ Encourage excellence within the engineering profession.
- ▶ To develop the capabilities of staff to meet the demands of changing technical and managerial requirements.
- ▶ To bring about continuous improvement through quality management.
- ▶ To undertake engineering work in compliance with the Codes of practice on Risk and the environment.
- ▶ To carry out the continuing professional development necessary to ensure competence in areas of future intended practice
- ▶ Engage qualified human resources and advanced technological resources and methods in undertaking our tasks to help achieve our clients' goals and objectives.





COMPANY ORGANOGRAM



SCOPE OF WORK

We have a uniquely collaborative way of working with our clients until solutions are implemented, results flow and building capacity throughout the project's life cycle and beyond underpinning sustainability for long-term relationships. Our scope of work includes:

MECHANICAL ENGINEERING

BOILERMAKER

- Re-build of buckets for open cast and underground machines
- Re-build of bowls, blades.
- Conveyor belt structures, belt drives, shuts and feeder breakers
- Maintenance, supply of liners and replacement of liners



DIESEL MECHANICS

- Components rebuild for Earth moving machines and underground machines
- Maintenance of FEL, ADT, Excavators, Grader, Dozer, Rigid dump trucks (Open cast machines)
- Maintenance of LHD's, shuttle cars, roof bolter both single and double boom, Flinches low profile, Tractors, LDV's (underground)
- Building and maintenance of mobile pumps, maintenance and rebuild of slurry, centrifugal pumps, submerged pumps.
- Machine maintenance and rebuild
- Supply and installation of machine components
- Repair of hydraulic cylinder and actuators
- Installation and maintenance of workshop roller doors
- Plant maintenance
- Conveyor belts repairs including cold and hot splicing
- Plant and Labour hire
- Construction and maintenance of water line using steel or HDPE pipes



SCOPE OF WORK

ELECTRICAL ENGINEERING

- High tension and Low voltage electrical installation, maintenance and repair
- Electrical wiring and electronic control system
- Exhaust fumes
- Transformers
- Transformer and pump protection system
- Soft starter
- Lighting protection
- Cable, cable termination and cable accessories (phase pins, joint kids, exo-thermic welding cable mould)
- Build inline skids
- Build electrical Panels
- Electrical infrastructure development
- Stringing
- Medium and low voltage fault fining
- Supply electrical measurement instruments
- Issuing of Electrical certificates of compliance (COC)
- Maintenance, installation, testing, repairs, fault finding and commisioning of High Tension,
- Medium and Low Voltage Other related electrical installation service and repair, fault finding/troubleshooting, field engineering, liaison, inspection, commission and preventative maintenance.



AUTO-ELECTRIC

Manufacturing, supply and commission of:

- Wi-Fi Trailers
- Solar powered trailers
- Trailer mounted generator sets
- Battery boxes
- Auto Electrical Panels
- Cable Racking
- Handrail and stepladders
- Brackets, guards, etc as per customer request
- Heavy Duty Auto Electrical Harnesses
- Manufacturing of PDU boxes, Lock Out Boxes and LDV PDU Boxes

LUBRICATION

- Centralized automatic grease system
- Live online condition monitoring grease system
- None pressurized fuel sstem
- Thermal shield covers
- Dust control system
- Pit pumps maintenance and refurbishment
- Labour hires



Sand Blasting
Water Proofing
Rubber lining
Plastic Welding

SCOPE OF WORK

SAND BLASTING

We also do sand blasting also known as abbrasive blasting by propelling a stream of abrasive material against a surface under high pressure to smooth a rough surface, roughen a smooth surface, shape a surface or remove surface contaminants. A pressurised fluid, typically compressed air, or a centrifugal wheel is used to propel the blasting material called media.



WATER PROOFING

Waterproofing services for:

- ▶ Concrete roofs
- ▶ Insulated Boarded Roofs
- ▶ Tiled Roofs
- ▶ IBR and corrugated roofs
- ▶ Parapet walls and retaing walls
- ▶ Basements

RUBBER LINING

We use tough elastic polymeric material used to coat exterior surfaces or the interior of containers (e.g., tanks, pipes and other vessels) that house fluids to prevent corrosion. Rubber lining is used to prevent corrosion, substance contamination, ignition and explosion.

Our steps are as follow:

1. Obtain the dimensions of the vessel to be lined
2. Examine the chemical composition of the stored substance to prevent reactivity.
3. Obtain a rubber material suitable for the entirety of the pre-determined vessel dimension.
- 4 Examine the rubber chemical composition to ensure no reaction with the housed chemical



PLASTIC WELDING

Plastic welding rods (also known as thermoplastic welding rods) are used to bind or weld two separate pieces of plastic together. Our plastic rods are available in round triangular, flat and oval, MW Profile, MKW Profile shape and profile cross-section

SCOPE OF WORK

CONSTRUCTION AND INDUSTRIAL WATER CLEANING

Construction and maintenance of:

Installation of Transformers, Isolators, VT and CT Junction Boxes, Sub-Station Batteries and Metering Schemes Commissioning, Power-Current and Voltage Transformer Installation, HT/LT Cable Fault Locator, Termination and Repair, Fault Investigation, Repair and Commissioning, Pre-Construction Design and Estimating. HT/LT Cable Routing/ Installation. Swimming Pool Installation. Erecting Boundary Walls. Dry Wall and Partitioning. Scaffolding Set-Up. Remodelling. Excavations etc.

- Plan Designs
- Road Constructions
- House Construction



Industrial Water Cleaning:

Water Collection, Treatment and Disposal activities. Slurry Dam Cleaning and Dredging of Borrow Pits. Waste Management and Remediation Activities. Toxic and Hazardous Waste Clean-up. Dam and Marshland Rehabilitation. Sediment Removal. Marshland Cleaning. Material Recovery. Dam Dredging. Dam Cleaning. Water Supply. Oil Surfaces. Sewerage etc.



SCOPE OF WORK

GRASS CUTTING AND LANDSCAPING

Our company also provides cutting edge lawn mowing services. We provide regular lawn mowing services, tailored to suit and designed to keep your lawns and outside area looking tidy and well cared for.



We are dedicated to satisfy our customers and/clients. Our staff is well trained, so your lawn and property is in safe hands.

Our gardening and landscaping solutions team can also provide advice and assistance for longer-term seasonal lawn care including:



- Weed and Pest Control
- Fertilising
- Irrigation Systems
- Soil Management
- Aeration and Coring
- Turfing and Repairs

SCOPE OF WORK

MINING AND QUARRY

Our Mining and Quarry services operation is of quality and effectiveness, we specialize in drilling and blasting.

We aim to provide a Rock on Ground service to a number of commercial quarries throughout the Mpumalanga and Gauteng region.

We aim to build and establish, long-term relationships with our customers having worked for years in some quarries. We have secured these long-term relationships by anticipating and planning for our customers rock on ground needs and planning accordingly, thereby ensuring the supplies and services to our customers.



We provide ourselves with the services that we offer to our customers and clients, and we believe that we have the capacity to expand so that we can welcome opportunities to quote on the mining and quarry sector



REFERENCES

1. ELECTRICAL MAINTENANCE OF BUILDING, GENERATORS AND ISSUING OF COC

SERITI (KRIEL MINE)
CALVIN MASEKO
(082) 473 4161

2. MAINTENANCE OF UNDERGROUND MACHINES AND ELECTRICAL INSTALLATION

SERITI (KRIEL MINE)
MOEKETSI PHEA
(083) 561 5617

3. CIVIL WORK

SERITI (KRIEL MINE)
MKHOKHELI MLILO
(082) 899 6641